



GYEON[®]
quartz cloth

THE INNOVATIVE GENERATION
IN **CAR CARE**
PRODUCTS Q² / Q²M
PRODUCT CATALOGUE

Q²

TOP QUARTZ
COATING
PRODUCT LINE

Q²M

MAINTENANCE
PRODUCT LINE



GYEON[®] CERAMIC QUARTZ COATING
quartz cloth EXTREMELY HARD & VERY HYDROPHOBIC COATING FOR AUTOMOTIVE PAINT.





ABOUT GYEON

GYEON is a brand offering reliable, thoroughly-tested range of products which satisfies the needs of every enthusiast of detailing as well as requirements of professionals. At GYEON, we spared no efforts to provide You most up-to-date and dependable solutions that will boost the quality of outcomes and satisfaction from final results. It is our mission to deliver most technologically advanced products at a very competitive price.



GYEON products are not equivalent of colored waxes. They do not provide features like scent of bananas or strawberries, neither do they promise a vehicle's total transformation in a quarter of an hour but they do provide a long-lasting and high quality surface protection. That is why, if You wish to receive reliable effects, authentic, at least several-months durability, or a smooth operation of an impeccably looking vehicle, GYEON is the brand You can rely on.

WHY CAN YOU TRUST US?

Many years of collecting experience in professional detailing sector led us to the creation of the GYEON brand. We do not think of ourselves as just a manufacturer – we are foremost passionate about what we do. Every single position in our offer is a result of our strive to deliver best possible product in terms of quality, durability and comfort of usage. We have carried out dozens of tests, we had protected numerous cars by the time we managed to encapsulate optimum properties in one, compact bottle.

We respect Your time. That is why You can always count on a sincere, professional piece of advice whenever you decide to approach us with a query. We respect the comforts of your work, hence every GYEON product comes with all necessary key accessories as well as with an extensive, illustrated manual. We respect your taste in beauty, therefore our products are delivered in high-class packaging.

GYEON'S ULTIMATE TECHNOLOGY

Protection based on silicon dioxide (SiO_2) is the most sophisticated technology of car protection that so far has been developed. Previously exploited by the most demanding consumers from the electronic industry or used to protect the railway rolling stock from acts of vandalism, this compound is now introduced in its unique form to the automotive business by the GYEON brand.

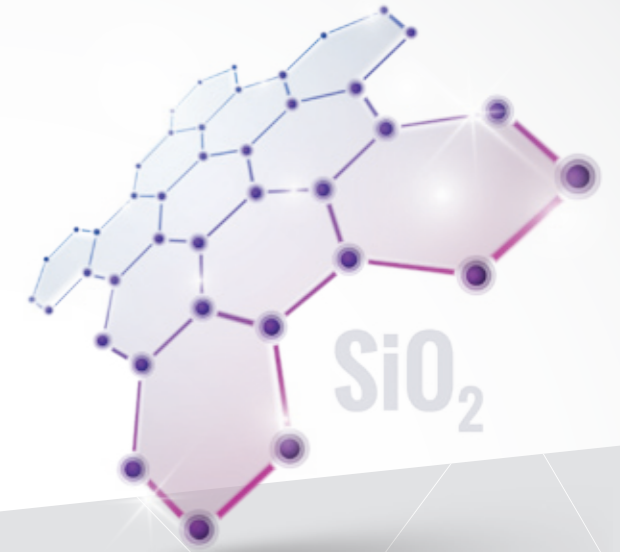
Owing to special chemical processes, silica is being blended with a suitable concoction of solvents which allows its application onto the surface of the paint giving as a result substantial hardness.

The crucial properties of the quartz coating are its ability to boost the total hardness of the paint and to increase it up to the level of 9H (hardness of the coating determined by Mohs scale) as well as its thickness. Therefore it should be referred to as something unique in the variety of automotive paints' parameters as it is the only coating with measurable thickness up to 1 micron.

Traditional paint protective coatings, based on natural or synthetic waxes, or polymer-based products (often referred to as nanotechnology) do not guarantee any measurable thickness. They stay on the paint till their natural oiliness runs out, or as long as their polymer chains are not tarnished too excessively. Usually the reduction of efficiency of such coatings is additionally increased by the usage of typical degreasing detergents. Quartz coatings on the other hand have entirely divergent structures, chemical composition and resistance properties.

Depending on the number of layers applied, thickness of quartz coating may amount from 0.2 up to 1.5 microns. The most critical, however, is the structural integrity that the layer displays. After having vaporized all the solvents contained in the product, where 90 % evaporates within the first 24 hours and level of 100% vaporization might be accomplished after 14 days (depending on the weather conditions), the layer becomes firm, solid as well as very hard and highly durable.

Owing to the quartz coating's thickness, all the scratching and fading, which may appear during washing or as a result of extensive deposition to caustic substances e.g. bird droppings, do not reach the paint, leaving its surface intact. Moreover, it is entirely proof to chemical substances (not only detergents) with pH between 2 and 11, which makes it outstandingly durable and insensitive to frequent washing with strong agents. Due to very small molecules tightly bounded together, any disarrangement of the structural integrity by external factors is technically impossible. The only way to remove the coating requires application of professional, intensive abrasives.



GYEON
quartz cloth

WHAT IS A WAX, WHAT IS A QUARTZ COATING - THE COMPOSITION

Quartz coating is a liquid, SiO_2 -based medium which protects painted automotive surfaces. It contains the solvents necessary to obtain a liquid consistence that eases overlaying on paint surface, which will after application vaporize due to contact with oxygen. Traditional waxes contain, in most cases, the Carnuba wax of Brazilian palm trees, beeswax or KPS-type, synthetic waxes.

WHAT ARE THE NATURAL PROPERTIES OF WAXES?

Natural waxes or mixtures of natural and synthetic waxes are characterized primarily by high oiliness

resulting in a wet look finish. Yet the same property becomes the products' disadvantage, since, as built upon delicate oils, it is not resistant to strong detergents used in car wash or even as ingredients in stronger car shampoos. Furthermore waxes are exposed to fast dissolution by chemical contaminants, road salt or bird droppings. Their oiliness, desirable in terms of appearance, translates also into a troublesome and tedious rubbing off the product after evaporation of the solvents. It may also leave smudges or off-white sediment that is hard to remove.

Due to those reasons traditional waxes will be in the nearest future perceived as less efficient in the hierarchy of utilized detailing products. Although they may temporarily add aesthetic value they cannot guarantee a real protection.

WHAT ARE THE NATURAL PROPERTIES OF QUARTZ COATING?

Very high structural integrity of the quartz coating prevents damage by external factors, such as strong chemicals and detergents, bird droppings and road salt. The coating dissolves heavy degreasers, alcohol, removing tar substances or metallic particles and due to its specific thickness and substantial hardness it protects the automotive paint from scratching and fogging. Moreover, it provides very high clarity and transparency, exposing details of the paint and finish.

WHAT IS THE RESISTANCE TO EXTERNAL FACTORS?

The table below shows most frequently appearing factors by comparison in sale 1 to 10 (where the parameter 1 is a total failure, and 10 full protection against a specific factor).

	QUARTZ	WAX
UV / SUN	9	3
CHEMICALS / DETERGENTS	10	2
ABRASION	9,5	1
SCRATCHES	7	0
SPEED / INSECTS	10	3

DIFFERENCES IN EVERY - DAY MAINTENANCE OF A VEHICLE

Apart from durability and resistance most vital area where quartz coatings manifest its superiority over waxes is every-day maintenance. Due to significant, self-cleaning properties of the coating, washing the car becomes much easier. Dirt adheres to the quartz layer more slowly than to the paint protected with wax, and its removal does often not even require detergents, only the water itself. The car which is quartz-protected may be washed with any products at any frequency, without fear of damage.

CONCLUSIONS

When taking into account all the characteristics required from a proper automotive coating, such as durability, efficiency in securing the paint, easiness of every-day maintenance etc., GYEON quartz coating seems to be an obvious choice. Owing to the specific properties of silica, basic compound of GYEON products, You will have a guarantee of flawless appearance of Your car for a long time.

MOST IMPORTANT FEATURES OF GYEON'S PRODUCTS

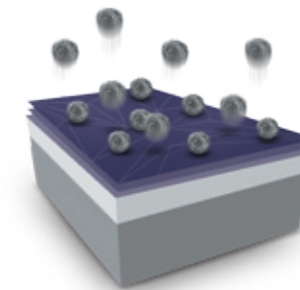
RESISTANCE

All protective coatings signed by GYEON are based on SiO₂, which is a guarantee for an exceptional resistance to chemicals of 2-11 pH, as well as to other harmful substances present on the roads and in the atmosphere.



SELF-CLEANING ABILITIES

Due to the most pivotal property of products based on SiO₂, which is high capability of water- and contaminants-repelling, a vehicle protected with quartz coating remains clean significantly longer and its usual maintenance is much easier and less time-consuming.



DURABILITY

GYEON is a standard-setter when it comes to durability of protective coatings, offering all detailing enthusiasts a maximum performance, while professionals – a 2-year warranty for the Q² MOHS PLUS protection.



EFFICIENCY

30ml of quartz coating is an equivalent to a year-lasting single car protection, whereas such products as Q²M IRON or Q²M CURE for long will remain part of a detailer's collection.



SIMPLE USE

Proper application is crucial to achieve distinct outcomes, therefore our products combine sophistication of technology with simplicity of use. Each of them is furthermore equipped with an illustrated manual.



EFFECT

One of the primary reasons behind conducting an auto-detailing treatment is protection of automotive surface and secondary to is embellishment of vehicle's looks. GYEON combines exceptional durability with visual effects that often overshadow what high-quality natural waxes can do.





Q²

TOP QUARTZ COATING PRODUCT LINE

Q² PRIME

Q² MOHS

Q² MOHS+
Q² MOHS & Q² PHOBIC

Q² VIEW
Q² CLEANSE & Q² REPEL

Q² TRIM

Q² RIM

Q² TIRE

Q² ANTIFOG

Q² CANCOAT



PRIME Q²



HIGH DURABILITY & CHEMICAL RESISTANCE

Q²PRIME is an advanced ceramic automotive paint coating, which offers not only high durability but most of all superb hydrophobic properties. Unlike other products, owing to its content of far beyond 50% SiO₂, Q²PRIME gives an incredible transparency of the cured coat. It is also totally resistant to any type of chemical with ph between 2 and 11.

PACKAGE CONTAINS: Q²PRIME 30/50ML / Q²M CURE 100ML
1 APPLICATOR PAD / 4 SUEDE APPLICATORS



EASY TO APPLY

The basic property of Q² PRIME is its amazingly simple application. It is a highly advanced product based on silicon dioxide (SiO₂), which requires of a non-professional user an effort comparable with the one used when applying traditional natural wax. An ergonomic applicator that comes as a part of the set permits a fast and effective product application over the paint, whereas the very polishing of a delicate bloom does not present any difficulties - it is far easier than polishing synthetic waxes.

SELF CLEANING ABILITIES

One of the most important distinguishing characteristics of Q² PRIME compared to other protective coatings, is its unparalleled self-cleaning ability. Of course, the coating does not remain perfectly clean after a long drive in hard weather conditions, but this property can significantly extend the intervals between car washes.



CANDY GLOSS

Q² PRIME gives as well a lot of “candy” gloss especially on light metallic paints. It strengthens the shine of all metallic / xyralic particles and makes them “come alive”.



ENHANCED DURABILITY

Products durability may reach up to 12 months/20kkm /12,5k miles. It redefines standards of paint protection by adding around 2h to the average paint hardness (3-4h Mohs scale). Q² PRIME has a wide gap of temperature application availability. It can be used between 5° to 30° Celcius (41° to 86° Fahrenheit's) which makes it all-rounder amongst quartz coatings.

REDUCED CURING TIME

The curing time of Q² PRIME is also reduced to minimum. The vehicle can be driven in just 12 hours after application process. It is a major advantage not only for car detailing enthusiasts but also for professionals. By shortening the time necessary to finish the coating process it contributes to fast and high quality service. With its competitive pricing Q² PRIME is one of the most obvious alternatives to classic paint sealants and waxes.

MOHS Q²



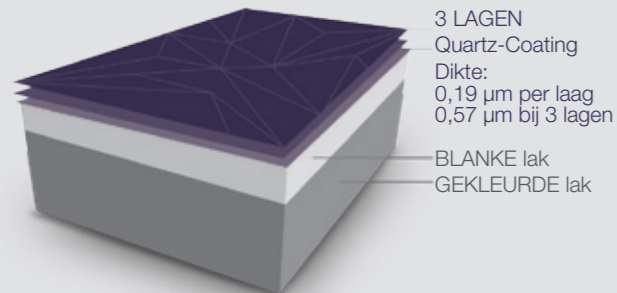
THE TOP OF RANGE QUARTZ COATING

Q² MOHS is the hardest created so far protective paint coating available for a wide range of users. With an average car paint hardness in the range of 3-4H Mohs, Q² MOHS adds another 3H, making it extremely resistant against scratches, marring and dullness. The hardness of the coating stands for a much slower degradation of the paint during use, protecting the valuable effect achieved during a paint correction.

PACKAGE CONTAINS: Q² MOHS 30/50ML / Q²M CURE 100ML
1 APPLICATOR PAD / 4 SUEDE APPLICATORS / 1 FACEMASK

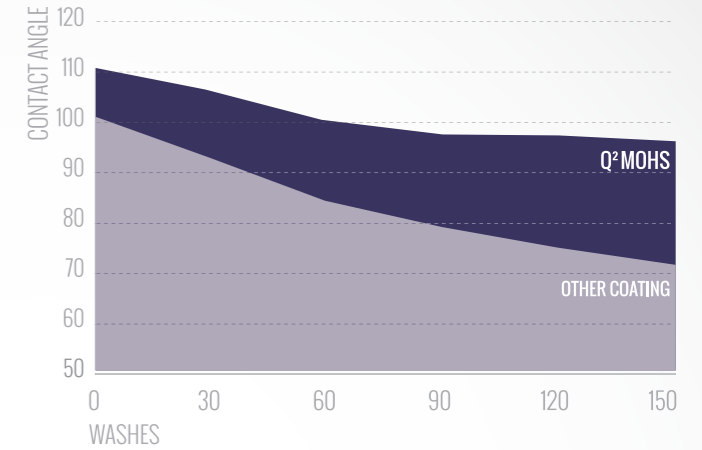
3 LAYERS IMPROVE SCRATCH RESISTANCE

Q² MOHS is easy to apply also on dark colored paints. Each added layer will improve durability and the scratch resistance. The product should be applied only on paint in very good condition, new or just after a paint correction. Application on scratched areas will result in lower gloss and durability. In order to achieve best results it is recommended to apply minimum 2 layers and optimal are 3.



DURABILITY & HARDNESS OVERTAKES STANDARDS

Q² MOHS is our top-of-the-range product and the hardest automotive paint coating developed so far. Laboratory tests prove the hardness of the fully cured coating is reaching up to 8 in the 10 grade Mohs hardness scale. That overtakes standard quartz/ SiO₂ coatings by nearly 2 grades in a 10 grade scale. The test results revealed also that the Q² MOHS coating adds up to 3-4H hardness to the typical clear coat paint. We conducted a test of endurance Q² MOHS coating using the cleaning test machine and the abrasive component in car washing. The results show an amazing durability of Q² MOHS coating.



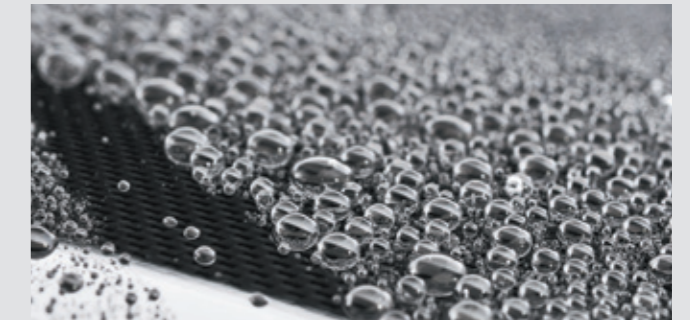
VERY DURABLE

Durability is one of the biggest advantages of this quartz coating. Retaining more than 80% of its original hydrophobic properties on the paint by up to 12 months, it provides maximum protection to the car against environmental factors. In comparison with classic HD natural waxes, the Q² MOHS coating lasts up to three times longer.



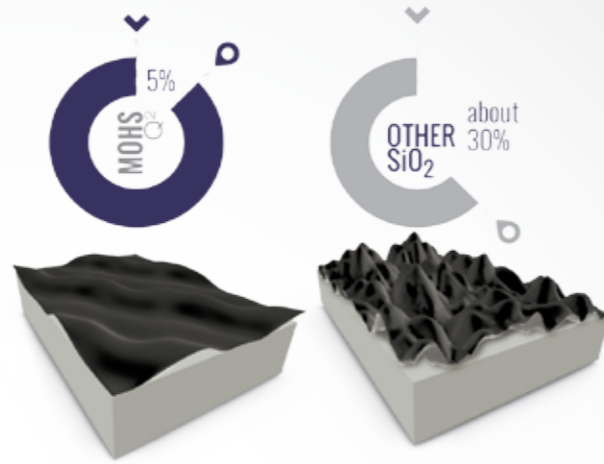
HYDROPHOBIC EFFECT EXCEEDING 80%

Another major advantage of the product is its outstanding hydrophobic effect and durability. Long term tests in real life conditions have shown durability over 12 months with a hydrophobic effect exceeding 80% of the outcomes just after the coating.



COATING SHRINKING LESS THAN 5%

The Q² MOHS coat is also a class of its own regarding the shrinking of the coating after application during first 12h. Most manufacturers claim to provide super thick coats of 0,5qm for 1 layer which applies to the thickness right after usage. Within 12 hours due to coatings' solvent evaporation the shrinking proceeds. Most SiO₂ glass coatings shrink during the curing process from about 0,5qm to about 0,15qm, where Q² MOHS coating alters its parameter by less than 5%, changing from 0,2qm to 0,19qm.



FLEXIBILITY & DEEP GLOSSY FINISH

Depending on various humidity and temperature conditions the Q² MOHS adjusts to the environment, letting it work exactly as the paint does. Such flexibility and elasticity influences also the durability by preventing the coat from micro-cracks which may affect its structural integrity. The Q² MOHS coating leaves a very deep, glossy finish. The visual effect differs from Q² PRIME, being much more glass like, offering slight more wet look and natural radiance.



SPECIFICATION & SKILLS

- DURABILITY ★★★★★☆
- GLOSS ★★★★★☆
- BEADING ★★★★★★
- HARDNESS ★★★★★★
- SELF CLEANING ★★★★★☆



MOHS+ Q²



FINEST QUARTZ COATING ONLY FOR PROFESSIONALS

Q² MOHS Plus is a professional set of ceramic automotive paint coating, dedicated for authorized detailers only. Containing our hardest Q² MOHS coating and Q² PHOBIC top coat, it ensures the highest quality and an incomparable visual effect amongst ceramic coating and even in comparison with high-end waxes.

PACKAGE CONTAINS:

Q² MOHS 50ML / Q² PHOBIC 20ML / Q²M CURE 100ML
1 APPLICATOR PAD / 4 SUEDE APPLICATORS / 1 FACEMASK

UPGRADE RESULTS

Thanks to Q² PHOBIC top coat the Q² MOHS coating system is rated with 5 stars in all categories:

- DURABILITY ★★★★★
- GLOSS ★★★★★
- BEADING ★★★★★
- HARDNESS ★★★★★
- SELF CLEANING ★★★★★



2 YEARS WARRANTY WITH Q² PHOBIC

It is recommended to apply two layers of Q² MOHS and then coat them with Q² PHOBIC. This process will guarantee a high hydrophobic effect and durability up to two years. As all GYEON coatings Q² MOHS Plus is totally resistant to any type of chemical with ph between 2 and 11.

CERTIFIED QUALITY BY GYEON

This product is dedicated only for professionals. Each company willing to use it on its customers cars must be certified by GYEON and ensure proper application quality by fulfilling strict craftsmanship and studio requirements. Each GYEON Q² MOHS Plus set will be sold only to certified detailers. Every set comes with a 2-year warranty, ensuring the customer that the product will keep its properties and effectiveness for a period in question.



SELF-CLEANING ABILITIES INCREASED THANKS TO Q² PHOBIC

Q² PHOBIC is a highly advanced top-coat, developed especially to be applied on ceramic paint coating. It gives hydrophobic effect, increases the self-cleaning abilities, extends durability and prevents the coating from water spots in its first few weeks after application.

GYEON'S CERTIFICATION & HOLOGRAM

Become the Authorized GYEON Detailer and certify the highest standard in application of GYEON automotive coatings.

GYEON
quartz cloth

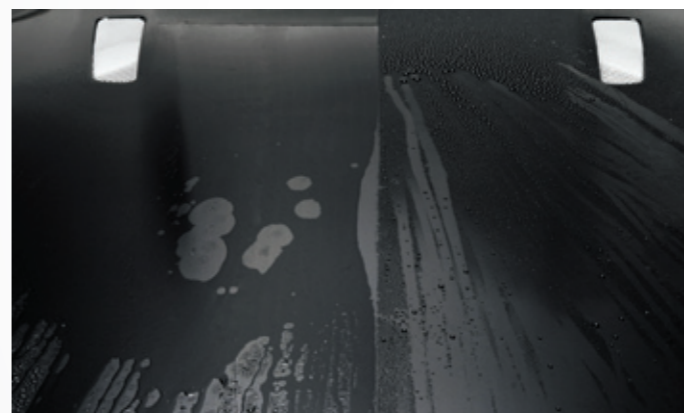


MOHS
Q²

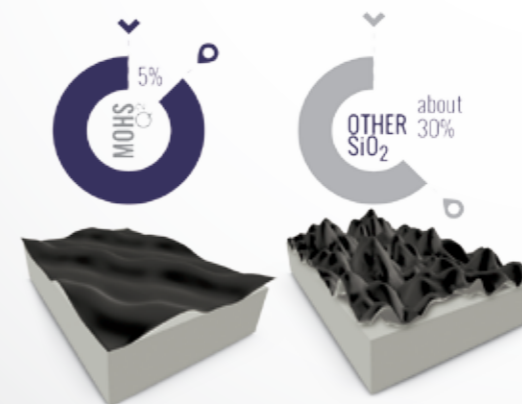
GYEON
quartz cloth

HI-TECH TOP-COAT REPELS OIL & PAINTS

Due to its oil repellent properties, Q² PHOBIC is one of only a few professional products to seal automotive paint against graffiti or any other type of paint. It has the ability to repel oils and paints and does not let it bond with the surface. Such solution is being known and used by rail operators, facilities managements and now GYEON brings this hi-tech top coating into the automotive industry. This product is not designed for separate sale and remains an integral part of the Q² MOHS plus set, being the final stage of the coating process. Its usage results in improved cleaning abilities) and increases the Q² MOHS durability by another 6 months.



MOHS+
Q²



TRIM Q²



EXTREMELY DURABLE GLASS COATING FOR PLASTIC

Q² TRIM is the most technologically advanced product to seal your trim, rubber and plain plastic exterior parts. It works brilliantly on renovated headlamps, preventing oxidation and loss of clarity.

PACKAGE CONTAINS: Q² TRIM 30ML
1 APPLICATOR PAD / 4 SUEDE APPLICATORS

TRIM RESTORATION & PROTECTION

Basing on SiO₂ mixed with a special bonding agent suitable for plastic, this product offers permanent trim restoration and excellent protection. Its main purpose is to protect your trim and plastics from UV rays and oxidation. It also ensures that the trim keep the new, "right out of the factory" looks for a long time.



REPELS WATER FOR 12 MONTHS

Q² TRIM repels water and dirt nearly as good as a glass coating on automotive paint. Due to its properties it can also restore even dull and strongly oxidized trim and preserve that effect for more than 12 months. Even if the strong hydrophobic effect starts to weaken after many months, the primarily restored deep color remains. As all GYEON products Q² TRIM is totally resistant to any type of chemical with ph between 2 and 11.



RIM Q²



OUTSTANDING QUARTZ COAT FOR RIM

Q² RIM is a quartz based rim sealing product. Its major advantage is an extreme durability and outstanding self cleaning properties. It is also totally resistant to any type of chemical with ph between 2 and 11.

PACKAGE CONTAINS: Q² RIM 30ML
1 APPLICATOR PAD / 4 SUEDE APPLICATORS

GUARANTEES EASY CLEANING

Many of rim finishes are sensitive to iron staining in brake dust, but Q² RIM prevents them from settling on rims surface and makes it's cleaning extremely easy.



FITS EVERY TYPE OF WHEELS

On the market we find at least a few types of car rims, like painted wet, powder coated, anodized or polished. Q² Rim is able to protect each of them. Even owners of classic models with polished lips noted that much less effort is needed to refresh mirror-like finish on wheels that were primary protected with Q² Rim, which was not the case for other available on the market wheel waxes.

TIRE Q²



DEEP, MATT BLACK & CLEANLINESS FOR TIRES

Q² TIRE is a SiO₂ based tire specific restoration and dirt repellent coating. It is not a classic tire dressing, Q² TIRE exceeds nearly every product available on the market in durability and its hydrophobic abilities.



SATIN FINISH

Q² TIRE leaves a matt to satin finish and a long lasting UV protection. The coat remains dry and anti-static shortly after application. Its durability varies depending on weather conditions and driving factors.



VIEW Q²



HYDROPHOBIC WATER REPELLENT

Q² VIEW is highly hydrophobic water repellent for automotive windows. Not only does it repel rain, but also dirt and it lets your windows defrost much faster and easier.

PACKAGE CONTAINS: Q² REPEL 20ML / Q² CLEANSE 20ML
1 APPLICATOR PAD / 4 SUEDE APPLICATORS / 1 SPONGE APPLICATOR

KEEP CAR WINDOWS CLEAN

Its aim is to provide maximum safety and comfort in rainy /winter conditions by keeping the vehicles windows clean and letting water come off by itself. Q² VIEW repels even large amounts of water and keeps the windshield clear by any speed over 50km/h (30 mph). The product might keep its full functionality for up to 12 months/20kkm/12,5 miles.



OUTSTANDING HYDROPHOBIC EFFECT

The set consists of two products - a Q² CLEANSER, which should be also considered as a bonding agent containing SiO₂ and a glass sealant- Q² REPEL. In order to obtain full durability and the maximal hydrophobic effect, it is necessary to use both products strictly by the user's manual.

Q² CAN COAT

NEW



EXTREMELY GOOD LOOKS AND A VERY DEEP SHINE

Despite the ease of application, Q² CanCoat has been designed to provide best possible looks. It gives a significant darkening effect, enhancing the gloss and depth of dark colored paints and adds a smooth, deep finish to light ones. While cured, it leaves a very sleek, protective layer.

REASONABLY PRICED

Unlike other aerosol coatings available on the market, Gyeon Q² CanCoat is a great 'value for money' product. It delivers the best possible results among such product range and is offered, by far, in a best price. Our goal as producer was to secure highest possible efficiency of coating power and close it in a can.

CAPACITY: Q² CANCOAT 350ML



GYEON
quartz cloth

Q² ANTI FOG

NEW



NO MORE FOGGY WINDOWS

Foggy windows are mainly caused by dampness brought into the car on your cloths in the wintertime, insufficient ventilation (AC problems) or large temperature differences between inside/outside. We provide you a product that will solve these windows' transparency problems. One application will prevent the windows getting foggy for at least 2 months.

PACKAGE CONTAINS: Q² ANTIFOG 120ML
1 APPLICATOR / 4 SUEDE APPLICATORS / 1 SUEDE 20X20

IMPROVES SAFETY

Q² AntiFog is a supplement to the Q² View offer and protects all glass surfaces of your vehicle against fog from the inside. You will benefit from its utilization especially in the autumn or wintertime, when lot of dampness is brought into the car on clothes and, due to temperature differences, it results in foggy windows. Therefore using both Q² View and Q² AntiFog is our recommended solution for rainy time of year to prevent loss of windows' transparency, which might influence driving safety.



EFFICIENT

A 120ml bottle of Q² AntiFog will be sufficient to protect all glass surfaces for more than one winter season in a large SUV. One application for 6 large windows uses a maximum of 20ml of product!



Q²M MAINTENANCE PRODUCT LINE

Q²M CURE
Q²M IRON
Q²M PREP
Q²M BATHE
Q²M BATHE+
Q²M WETCOAT
Q²M CLAY
Q²M WOOLIE
Q²M MITT



Q²M CURE



HYDROPHOBIC SPRAY SEALANT

Q²M CURE is the ultimate maintenance product for every type of base coating. It adds extra hydrophobicity, makes the surface feel slicker and has magnificent anti-static abilities.

CAPACITY: Q²M CURE 250ML / Q²M CURE 400ML / Q²M CURE 1000ML



Q²M CURE is the final product to be added onto a freshly quartz coated paint. It will prevent from water spots and reduce the time needed for the process to be finished before the car is taken on the road.

Q²M CURE can be used as well on unsealed paints, working as a spray sealant with two coating modes, both wet and dry. In such case it will last for over 4 weeks, up to 2 months.

This product is also excellent to be applied after car wash in order to remove any watermarks from drying towels and add gloss to the paints finish. As Q²M CURE is based on SiO₂, its regular use will have a major influence on the base coatings' durability by extending its performance.

Q²M IRON



EFFECTIVE IRON REMOVER

Q²M IRON is one of the most efficient and fast reacting iron filling removers on the market. This product was specially developed to ease the cleansing and help to do the “hard work” in both enthusiast and pro-detailer hands.

CAPACITY: Q²M IRON 500ML / Q²M IRON 1000ML / Q²M IRON 4000ML



SUITABLE FOR PAINT, WHEELS & GLASS

Q²M IRON can be used on paint, wheels, trim and glass. It had been tested on various surfaces and ph neutral formula guarantees full safety on all automotive surfaces. Its unique formula helps to remove even the most stubborn staining and brake dust from wheels, which makes Q²M IRON usage a necessity for superb detailing. Q²M IRON has a strong color changing effect. After approximately 1 minute most of the fillings should be marked purple. Also the smell typical for this segment of products had been reduced to minimum, to make the work more pleasant.



Q²M PREP



EXCELLENT OIL & GREASE REMOVER

Q²M PREP is the ultimate cleansing product for proper vehicles preparation before any glass coating application on any surface.

CAPACITY: Q²M PREP 500ML



EASY TO USE & WIPE

Unlike pure or diluted IPA it does not only lift oils and polish residue on the surface, but also makes it easier to wipe off with a microfiber leaving the paint smooth, clean and ready for coating. Q²M PREP has anti-static abilities, which will prevent dust from settling on previously cleaned with the product surface.

COMPLETELY BODY SHOP SAFE

What is more, though the product is based on IPA, it remains fully body shop safe, even on fresh paint. We insist on using Q²M PREP before applying any coating from the Q² line as IPA should not be considered as a universal, multipurpose cleaner and degreaser.

Q²M CLAY

CAPACITY: Q²M CLAY 100G



MILD DETAILING CLAY

Q²M CLAY is one of the most effective cleansers in eliminating all kinds of contaminants above the surface of automotive paint. It is chemical resistant, safe and suitable for all types of paint coatings.

CHEMICAL RESISTANT

This product is mild and gentle, leaving the automotive surface neat and ready for coating process. It comes in blocks which are comfortable in use. Due to Q²M CLAY properties it is also cost efficient as the bar lasts for a long time usage.

Q²M BATHE

CAPACITY: Q²M BATHE 400ML / Q²M BATHE 1000ML



EASY RINSING PH NEUTRAL SHAMPOO

Q²M Bathe is a pH-neutral bath. Due to its gentle character, it ensures a safe washing for every automotive surface, irrespective of the type of coating used to protect the vehicle. Also, a neutral pH is equivalent of safety of nickel-plated, chromium-plated or polished elements in finishing of a car.

SUPREME WASHING ABILITIES

Q²M BATHE comes in a concentrated formula which makes it an efficient product for often use. After application it leaves the surface clean and slick.

Q²M BATHE+

CAPACITY: Q²M BATHE+ 400ML



GETTING DIRTY MUCH MORE SLOWLY

The main aim while developing Q²M Bathe+ was to obtain a complex, one step AIO car wash. We added ingredients providing great hydrophobic properties and ensured the wash to be as delicate and smooth as possible. At the same time we tried to secure as much as possible of self cleaning abilities, enabling you take care of your car less frequently than usually when poor weather conditions occur.



GENTLE WASH, STRONG HYDROPHOBIC EFFECT

Q²M Bathe remains not only totally safe for every surface of your vehicle but also is very gentle for skin too! Its pH is neutral and does not contain any hazardous ingredients. It guarantees a smooth, mild wash due to its superb slickness and leaves a surprisingly strong hydrophobic effect.



Q²M WET COAT

NEW



POSSIBLE USE ON ALL SURFACES

A major benefit of Q²M WetCoat is its versatile character, allowing usage on almost every exterior surface of your vehicle. It will add great self-cleaning properties to not only the paintwork but also to plastic/metal trim, rims or windows.

CAPACITY: Q²M WETCOAT 500ML



THE EASIEST WAY TO OBTAIN THE SELF-CLEANING EFFECT

One of basic qualities of HQ coatings is making your everyday care much easier and less frequent. Therefore Q²M WetCoat is probably the easiest way to secure strong self-cleaning properties of your car' surface.



Q²M WOOLIE & MITT

SOFT & SAFE GLOVES

The basic quality of a good wash mitt is its softness and capability of absorbing dirt. Both Q²M MITT and Q²M WOOLIE are made of the softest available wool. It comes really handy during regular care over the vehicle. It is soft and by that safe for every kind of surface.



ERGONOMIC DURING WASH

Dropping a mitt on the ground while washing eliminates it from further use. Every glove becomes much heavier while being soaked with water and shampoo, making it easy to slip during usage. To prevent that, the Q²M WOOLIE has an ergonomic gripping system and Q²M MITT a comfortable welt.



SPECIFICATION & SKILLS

Q² GYEON'S PRODUCT LINE

PRODUCT SET	Q ² PRIME	Q ² MOHS	Q ² MOHS+	Q ² TRIM	Q ² RIM	Q ² VIEW	Q ² TIRE	Q ² ANTIFOG	Q ² CANCOAT
DURABILITY	up to 12 months / 20K km	>12 months / 20K km	up to 24 months / 25K km	up to 12 months / 15K km	6-9 months / 10K km	up to 12 months / 20K km	up to 2 months / 5 washes	>2 months	>6 months / 10K km
THICKNESS	0,2 - 0,5 qm	0,2 - 0,5 qm	0,5 - 1qm	0,5qm	0,5 qm	-	-	-	-
PHTOLERANCE	pH 2-11	pH 2-11	pH 2-11	pH 2-11	pH 2-11	pH 2-11	-	-	pH 3-11
CONTACT ANGLE	>110'	>105'	>90'	>80'	>90'	-	-	<10'	>100'
HARDNESS	+2H	+3/4H	up to +5H	-	-	-	-	-	-
TEMPERATURE RESISTANCE	-	-	-	-	up to 350°C	-	-	-	-
SELF CLEANING SPEED BARRIER	-	-	-	-	-	50 kp / h	-	-	-
ALCOHOL TOLERANCE	-	-	-	-	-	full	-	-	-
SiO ₂ [%]	-	-	-	-	-	-	-	-	>10%
CONSUMPTION	30ml / car	30ml / car	1set / 1car	ca. 30ml / 5 -10 cars	ca. 15ml / 1 set	20ml / findshield +2 side windows	10 -15ml / 1set	15ml / car	150ml / car

SPECIFICATION & SKILLS

Q²M GYEON'S PRODUCT LINE

PRODUCTSET	Q ² M CURE	Q ² M IRON	Q ² M PREP	Q ² M BATHE	Q ² M BATHE+	Q ² M WETCOAT	Q ² M CLAY	Q ² M WOOLIE	Q ² M MITT
DURABILITY	up to 6 weeks	-	-	-	up to 6 weeks	up to 12 weeks	-	up to 200 washes	up to 200 washes
SiO ₂ [%]	>5%	-	-	-	<5%	<5%	-	-	-
PHTOLERANCE	pH 4-9	-	-	-	-	-	pH 2-11	-	-
PH	-	pH 6	-	pH 6	pH 6	-	-	-	-
CONTACT ANGLE	>80'	-	-	-	-	>90'	-	-	-
IPA [%]	-	-	>50%	-	-	-	-	-	-
CONCENTRATION	-	-	-	1:500	-	-	-	-	-
SIZE	-	-	-	-	-	-	-	20x30cm	20x30cm
CONSUMPTION	30ml / car	150ml / car	up to 150ml / car	15-20ml / bucket	15-20ml / car	100ml / car	20gr / car	-	-



WE ARE CONTINUOUSLY WORKING ON
NEW & INNOVATIVE SOLUTIONS.

**MORE GREAT
PRODUCTS
ARE COMING SOON.**

PLEASE CHECK OUR WEBSITE TO FIND OUT MORE:
WWW.GYEONQUARTZ.COM

GYEON[®]
quartz cloth



GYEONQUARTZ.COM

GYEON[®]
quartz cloth

GYEON IS A TRADEMARK OR REGISTERED TRADEMARK OF ICTRADING LIMITED IN THE UNITED STATES AND OTHER COUNTRIES.
ICTRADING LIMITED / 20/F., CENTRAL TOWER / 28 QUEEN'S ROAD / CENTRAL, HONG KONG, SALES@GYEONQUARTZ.COM